

# DataTrak™



## PAT Hardware



pat testing  
fixed wire testing  
asset tracking  
it audits  
energy audits  
risk assessments  
dse assessments  
cable management  
pat training  
asset management software  
it auditing software  
**pat hardware**  
labels & accessories

# equipment you can trust

## What equipment is best for me?

We recommend Seaward Portable Appliance Test equipment. We use these ourselves and they are well "battle" proven. They have shown themselves to be excellent testers - accurate, fast, efficient, tough and reliable.

We can supply the entry level PrimeTest 100 which is ideal for most requirements, or the top level PrimeTest 350 - a far more advanced tester. Both are an excellent choice and we offer competitive pricing along with a comprehensive maintenance and calibration service. We can also supply all of your PAT labelling requirements, and PAT record keeping software in the form of our Capture-fm® Mobile and Asset-fm® software. We use the software ourselves and it is also used by other PAT testing companies as it provides the best way of collecting, managing and reporting PAT data.

## WHY THE PT100?

- **A Versatile Tester**  
It's a PAT tester, an IEC Lead Tester and a Power Socket Tester all in one super compact unit. This product provides everything you need for basic testing facilities.
- **Easy Use**  
Testing with the PrimeTest 100 couldn't be easier. In fact, it only takes the press of a button to choose your testing mode.
- **Hand-Sized –Highly Portable**  
Measuring only 26x10cm, the PrimeTest 100 fits into the palm of your hand. It's lighter too, under 1kg, making it one of the smallest testers available.
- **Power to the Battery**  
Like its big brothers, the PrimeTest 100 is battery powered, making it light, portable and extremely easy to use because there are no cables to plug in.

## PrimeTest 100

Top of its class, the PrimeTest 100 is a functional, diverse and highly useful tool. Featuring three operational modes, it is an ideal choice for those looking for an easy to use, comprehensive unit.

Simply pushing a button will give you the option of either PAT Test mode, Class I and Class II, IEC Lead Test mode or Power Socket mode.

To further add to its easy operation, a bright display shows the test results values as well as PASS or FAIL indication, and like the PrimeTest 100's family members, it is battery powered to help users be quicker and more efficient in their work.

The PT100 is a great choice for those looking for a great, versatile tester that is easy to use.

### PrimeTest 100 Specifications

#### PAT TESTS

##### Earth Continuity

Test Current	+/- 200mA DC
Display Range	0.00ohms – 19.99ohms
Pass Value	0.2ohms

##### Insulation Resistance

Test Voltages	500V DC
Display Range	0.20Mohms – 19.99Mohms
Pass Value	2Mohms

##### IEC Lead Test

Tests Performed	Earth Continuity Insulation Resistance Live, Neutral Continuity and Polarity
-----------------	--

#### Equivalent Leakage Class I

Test Voltage	40V, 50Hz AC Nominal
Display Range	0.10mA – 19.99 mA
Pass Value	0.75mA

#### Equivalent Leakage Class II

Test Voltage	40V, 50Hz AC Nominal
Display Range	0.10mA – 19.99mA
Pass Value	0.25mA

#### Circuit Tests

##### Power Socket Test

Input Voltage Range	230V +10% - 15% AC
Indicators	Phase to Earth Voltage Phase to Neutral Voltage Neutral Earth

#### Additional Information

Weight	800g
Dimensions	26cm (l) x 10cm (w) x 5.5cm (d)
Power Source	6 x AA Batteries



# PrimeTest 350

The PrimeTest 350 PAT tester enables fast and efficient portable appliance testing. This handheld battery powered tester stores results and connects wirelessly to results printers and barcode scanners. The data logging feature means results, asset IDs, location and other data can be stored and transferred to PAT testing software such as the Capture-fm® Mobile and Asset-fm ®package for record keeping and traceability. Its vast range of tests include alternative leakage, 250V insulation and load is measured during the protective conductor and touch current tests.

With the PrimeTest 350, you can shorten your hours spent testing. This top of the range tester now has even more features making testing faster and more efficient. Bluetooth technology means it communicates with all your accessory equipment without using wires, and with USB download it's simple to transfer data to a PC. No wires required with this tester, batteries are charged while they're still in the unit, via a charging port. Charging time is just four hours. What's more, it does every test you need and complies to the new updated IET Code of Practice.

The PrimeTest 350 can complete Alternative leakage test, 250V insulation test (for use when suppressors or other components prevent a 500V insulation test) and Load measurement. During the protective conductor and touch current tests, the load is measured and displayed as both a power and current measurement. What's more it measures

only 26cm x 10cm and weights under 1kg, so no more heavy kit to carry around. With new Carbon Neutral status, we think of this as the world's most advanced tester.

## PrimeTest 350 Specifications

### PAT TESTS

#### Earth Continuity

Test Current	+/- 200mA
Display Range	0.00ohms – 19.99ohms
Pass Value	User Defined

#### Insulation Resistance

Test Voltages	500V / 250v DC @ 1mA nominal
Display Range	0.01Mohms – 199Mohms
Pass Value	User Defined

#### IEC Lead Test

Tests Performed	Earth Continuity Insulation Resistance Live, Neutral Continuity and Polarity
-----------------	--

#### Protective Conductor Current/Load

Test Voltage	195V - 230V, 45Hz-60Hz
Display Ranges	0.15mA - 19.99mA 0.00kVA - 4.00kVA
Pass Value	0.00A - 16.00A
Pass Value	User Defined

#### Touch Current/Load

Test Voltage	195V - 230V, 45Hz-60Hz
Display Ranges	0.07mA - 3.5mA 0.00kVA - 4.00kVA
Pass Value	0.00A - 16.00A
Pass Value	User Defined

#### Alternative Leakage Current

Test Voltage	40V, 50Hz
Display Range	0.10mA - 19.99mA
Pass Value	User Defined

#### RCD Trip Time

Test Current	30mA rms, 0°/180° auto switched
Display Range	0ms - 200ms

#### Loop Impedance

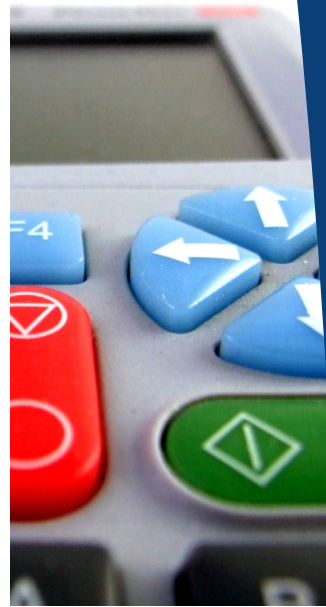
Test Current	Non-tripping for >30mA RCD
Display Range	0.0ohm - 199ohm

#### Power Socket Test

Voltage Range	195V - 253V
Voltage Indicators	phase-earth & phase-neutral

#### General

Memory size	8000 records
Weight	0.9kg
Dimensions	260mm x 100mm x 80mm
Power Source	6 x AA Batteries



PAT TESTING  
ASSET TRACKING  
FIXED WIRE TESTING  
MANAGEMENT SOFTWARE  
AND MORE

The DataTrak Head Office is located in Milton Keynes. Our engineers, however, are located around the UK - hence our nationwide service.

Although a relatively young company, the Board and Senior Management of DataTrak can offer a wealth of experience in facilities management, software design & development, IT management and providing service to customers.

We offer not only a range of quality services and products but also a very competitive pricing structure. Our Company policy though is simple - a total commitment to quality customer service at all levels.

Safety is a core value of our company. All DataTrak people, from leadership down to everyone in the field, personally challenge the notion that injuries will occur and hold the conviction that every accident is preventable. That's why our safety performance is second to none.

Our Customer base straddles the whole spectrum of commerce and industry - both private and public. For a number of years DataTrak has been recognised as a leader in our field. We are proud of our past but are looking to the future.

**DataTrak**<sup>TM</sup>

DataTrak Ltd  
Ground Floor, 7 Furzton Lake  
Furzton, Milton Keynes  
Bucks, MK4 1GA  
+44 (0) 1908 410790 ph  
+44 (0) 1908 410791 fax  
[www.datatrak.ltd.uk](http://www.datatrak.ltd.uk)

©Copyright 2011 DataTrak Ltd  
Version 7.11a

